

COMMON LEADERSHIP STYLES

Which type of leader are you?

01



Transformational Leadership

Typically inspire staff by creating an environment of intellectual stimulation.

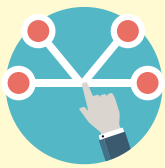
02



Transactional Leadership

Establishes a clear chain of command utilising a carrot & stick approach to management activities.

03



Servant Leadership

Prefers power-sharing models of authority & encourages collective decision making.

04



Autocratic Leadership

Have significant control over staff, rarely considers worker suggestions or share of power.

05



Laissez-faire Leadership

Characterised by their hands off approach, allowing employees to get on with tasks as they see fit.

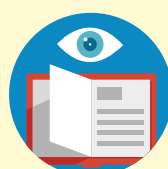
06



Democratic Leadership

Participative leadership, leaders often ask for input from team members before making a final decision.

07



Bureaucratic Leadership

Implemented in highly regulated environments, with strict adherence to the rules are important.

08



Charismatic Leadership

Relies heavily on the positive charm & personality of the leader in question.

09



Situational Leadership

A theory that the best leaders utilise a range of different styles depending on the environment.

SOURCES

<http://tec.com.au/resource/9-common-leadership-styles-which-type-of-leader-are-you/>

CREATED BY

Ivan D / Digital Dominator

